

MULTIPHASE SURFACE PUMP SYSTEMS FOR SHALE OIL

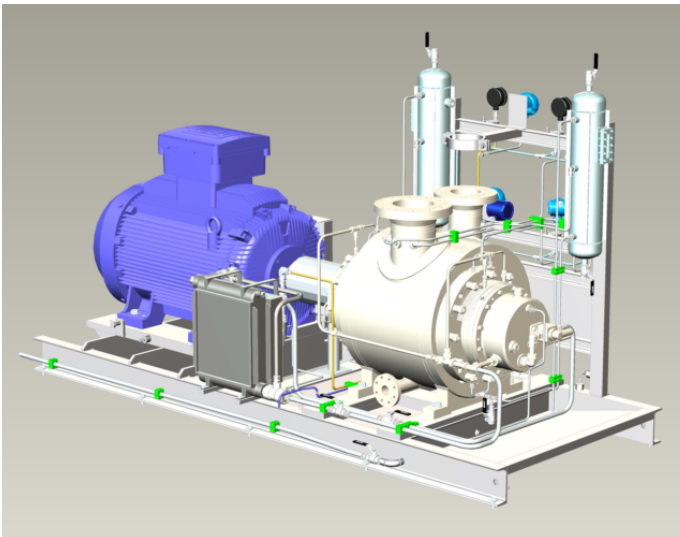
TWO-SCREW, POSITIVE DISPLACEMENT PUMPING TECHNOLOGY

PRODUCT PERFORMANCE YOU CAN RELY ON

Colfax Fluid Handling's surface multiphase pump systems boost your complete, integrated production flow (oil, gas, water) to improve challenging shale well economics. Our systems have over 30 years of proven success in multiphase gathering system boosting and mature well rehabilitation.

- Extend mature well productive life through backpressure reduction and management
- Limit wellsite separation, compression and treatment facilities
- Consolidate to a single takeaway pipeline (eliminating flaring)
- Reduce LOE via equipment consolidation and controlled pump operations at its 'best efficiency point'
- Seamlessly handle natural flow volumes and compositional variations
- Eliminate vapor-locking

OPERATING ENVELOPE FOR THE "PRODUCTION EXTENDER" STANDARD KIT



	Low	High
Total Volume (BPDE)	6,000	27,000
Gas Volume (MSCFD)	---	600
GVF (Gas Volume Fraction)	0%	97% Continuous 100% Intermittent
Inlet Pressure (PSI)	40	150
Pressure Differential (PSI)	0	225
Solids (% Volume)	0%	2%
H2S (% Volume)	0%	1%