

# CFHM SERIES PUMP

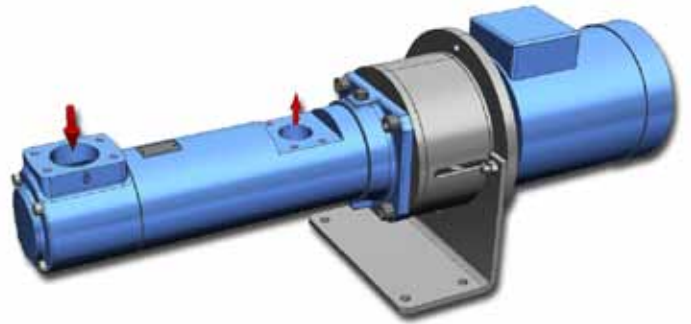
## THREE-SCREW PUMPS STANDARD PRODUCT SPECIFICATIONS

### COLFAX FLUID HANDLING INDUSTRIAL SOLUTIONS

The CFHM series pump is suitable for operation on clean lubricating liquid and is especially well-suited for high pressure lubrication, hydraulic and control oil services. Typical applications are found on rotating machinery and other equipment where forced oil flow is required.

The CFHM series is available in sixteen displacements across six frame sizes. The pump case is aluminum and the covers are cast iron.

The CFHM series three-screw pump delivers the benefits that matter most to OEM's: quiet operation, long service life, low pressure ripple and maximum energy savings, resulting in the highest "Total Savings of Ownership" across the entire life cycle of your pumping equipment.



**CFHM - 140 WITH ELECTRIC MOTOR**

Typical sizes 40 through 440

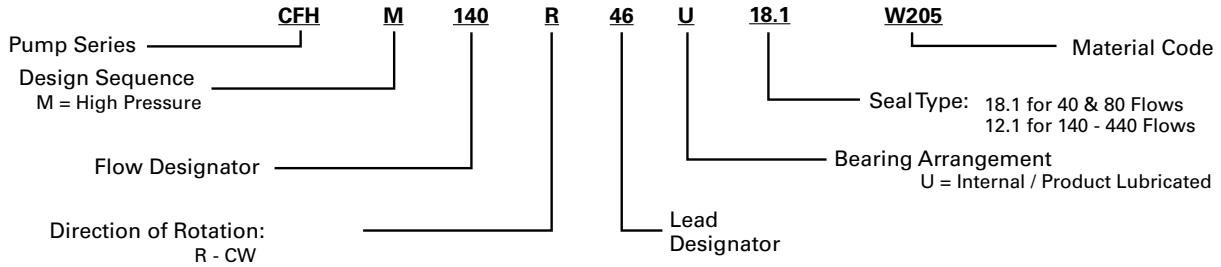
### PRODUCT SPECIFICATIONS

Casing / rotor housing	Aluminum
Power rotor	Nitrided Steel
Idler rotor	Nitrided Steel
O-rings	Fluorocarbon
Seal & bearing	Bellows mechanical shaft seal. (Carbon vs. silicon carbide) Open, product lubricated ball bearing
Outlet pressure	To 102 BAR (1479 psi-g) - not to exceed 100 BAR differential (1450 psi-d) continuous operation
Inlet pressure	2 BAR (29 psi-g)
Viscosity	3 cSt (36 ssu) minimum - 760 cSt (3520 ssu) maximum
Temperature	-18 - 100° C (0 - 212° F)
Speed	To 3600 RPM
Drive	Direct only
Rotation	Clockwise facing pump driveshaft
Mounting	Face flange (foot mount optional) Horizontal or Vertical
Port connections	ISO 6162-1 Type 1 (SAE Code 61) drilled and tapped for metric bolting; Inlet head is rotatable in 90° increments
Filtration	60 mesh recommended
Accessories	Available with or without electric motor and SAE port fittings

## CFHM SERIES PUMP

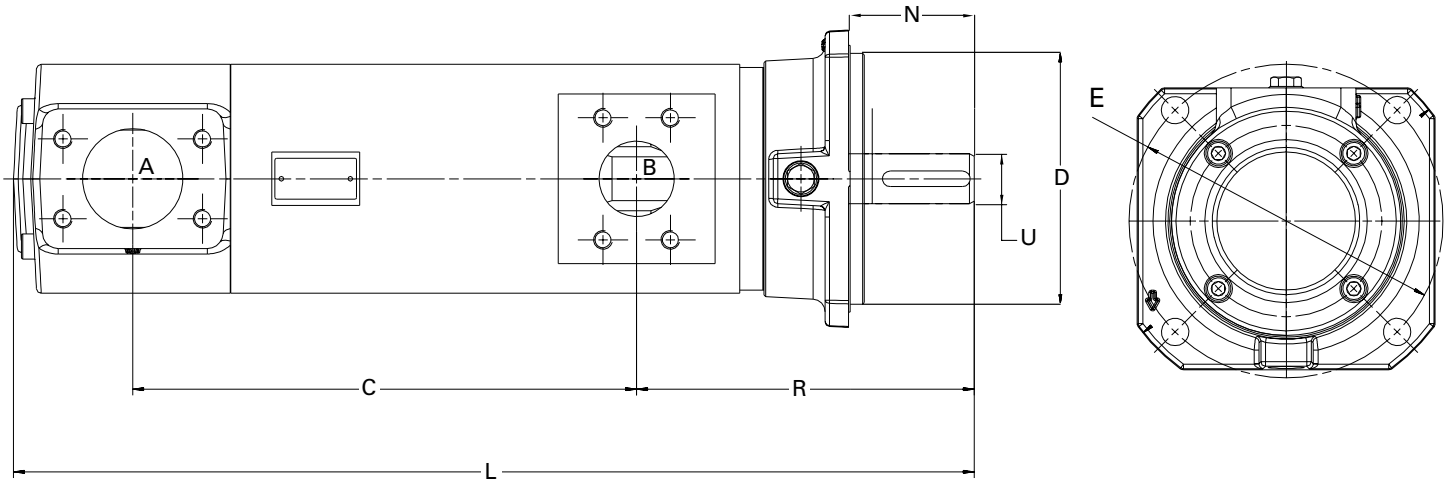
Pumps in the CFHM series are fitted with a friction drive, single spring mechanical shaft seal with carbon and aluminum oxide faces. The elastomeric components made of fluorocarbon material. The ball bearing is located within the pumped liquid and receives constant lubrication and cooling via the pumped fluid. Inlet and outlet ports are per ISO6162-1 Type 1 (SAE Code 61) and are rotatable in 90° increments. The mounting flange is per ISO 3019/2.

### CFHM PUMP NOMENCLATURE AND TYPICAL DIMENSIONS



Pump Size	A		B		C		D		E		L		N		R		U	
	MM	Inch	MM	Inch	MM	Inch	MM	Inch	MM	Inch	MM	Inch	MM	Inch	MM	Inch	MM	Inch
40	51	2	25	1	207.5	8.17	125	4.92	160	6.3	430	16.93	49	1.93	153.5	6.04	19.0	0.748
80	51	2	32	1.25	240.5	9.47	125	4.92	160	6.3	467	18.39	49	1.93	157.5	6.2	19.0	0.748
140	64	2.5	38	1.5	282	11.1	160	6.3	200	7.87	567	22.32	79	3.11	209	8.23	32	1.259
210	64	2.5	51	2	321	12.64	180	6.3	200	7.87	612	24.09	79	3.11	215	8.46	32	1.259
280	76	3	64	2.5	357	14.06	200	7.87	250	9.84	666	26.22	79	3.11	219	8.62	32	1.259
440	102	4	76	3	424	16.69	200	7.87	250	9.84	777	30.59	79	3.11	248	9.76	32	1.259

### CFHM 40 - 440



**Colfax Fluid Handling**  
 1710 Airport Road  
 Monroe, NC 28110-5020  
 Tel: +1.704.289.6511  
 Tol: +1.877.853.7867

Industrial Solutions Products & Services

ALLWEILER® HOUTTUIN™ IMO® WARREN®

COLFAX, ALLWEILER, HOUTTUIN, IMO and WARREN are registered trademarks of the Colfax Corporation or its subsidiaries in the U.S. and/or other countries. © 2013 Colfax Corporation. All rights reserved. GB-CFH002-CFHM-2/13

**COLFAX**  
 Fluid Handling

REDEFINING WHAT'S POSSIBLE